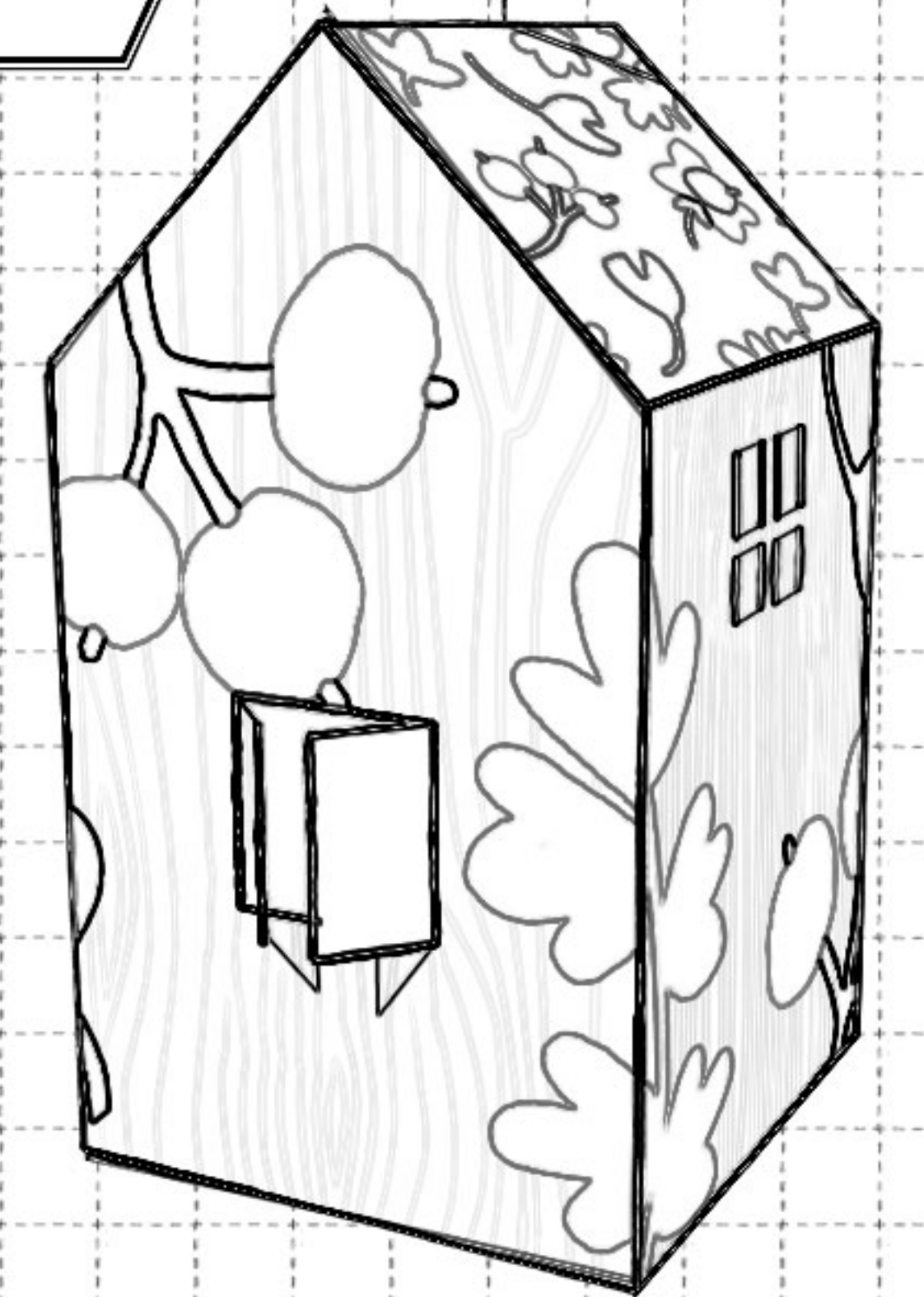
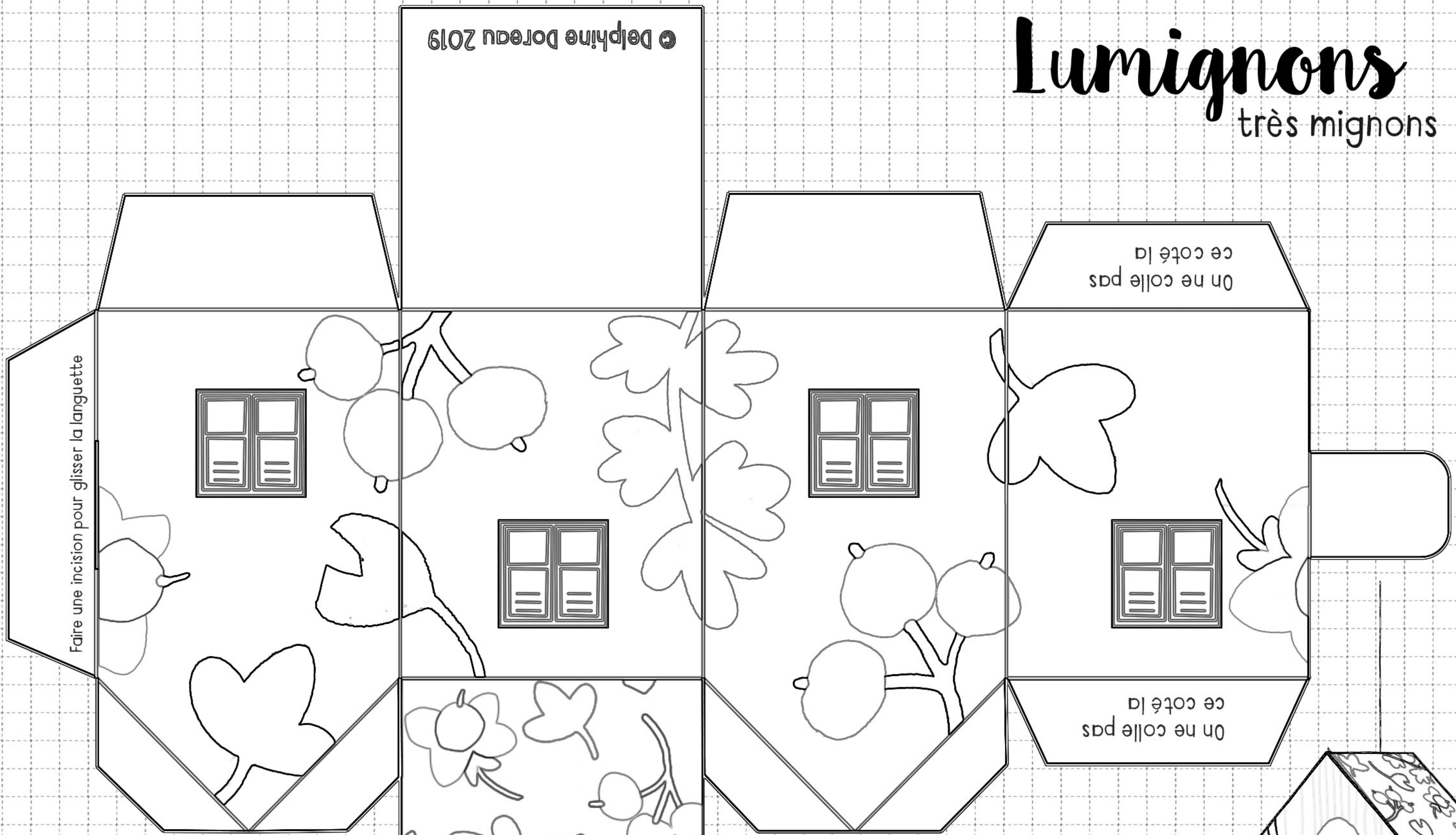


# Lumignons

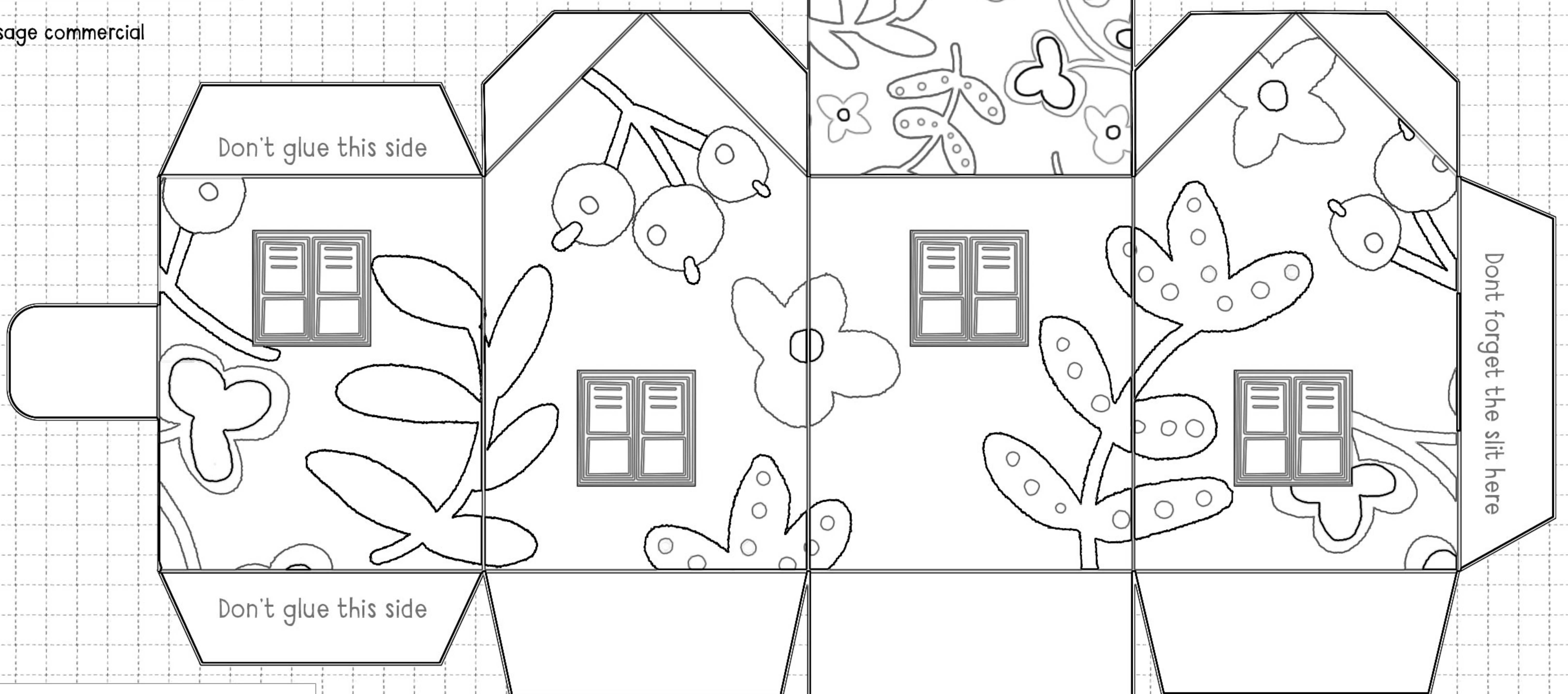
très mignons

© Delphine Doreau 2019



Couper le long des lignes noires (oui, tout le long du toit)  
plier le long des lignes bleues  
ouvrir patiemment les fenêtres.  
Coller les languettes.  
Insérer une **bougie LED à pile**  
(non, pas une vraie bougie!)

Pas d'usage commercial



Cut along the **black** lines  
(yes, including that line along the roof)  
Fold along the blue lines  
Cut and open the windows patiently,  
glue the tabs.  
Insert a **flameless** LED tea light  
Enjoy!

all right reserved. personal use only

© Delphine Doreau 2019